



---

UniversitätsKlinikum Heidelberg

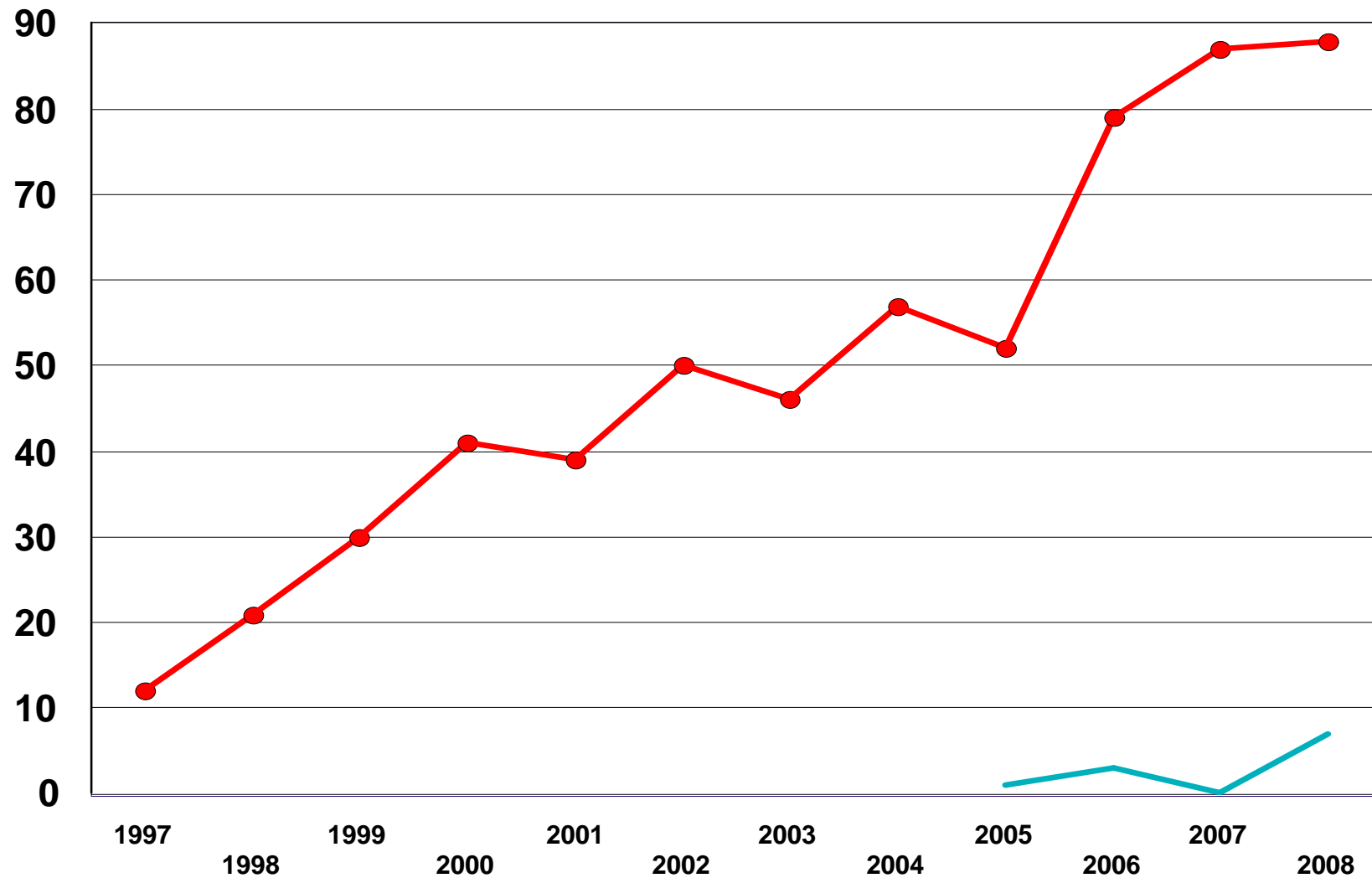
# **Allogene Stammzelltransplantation: Jahresbericht 2008**

**Sektion Stammzelltransplantation  
Abteilung Innere Medizin V  
Universitätsklinikum Heidelberg**

19.1.2009



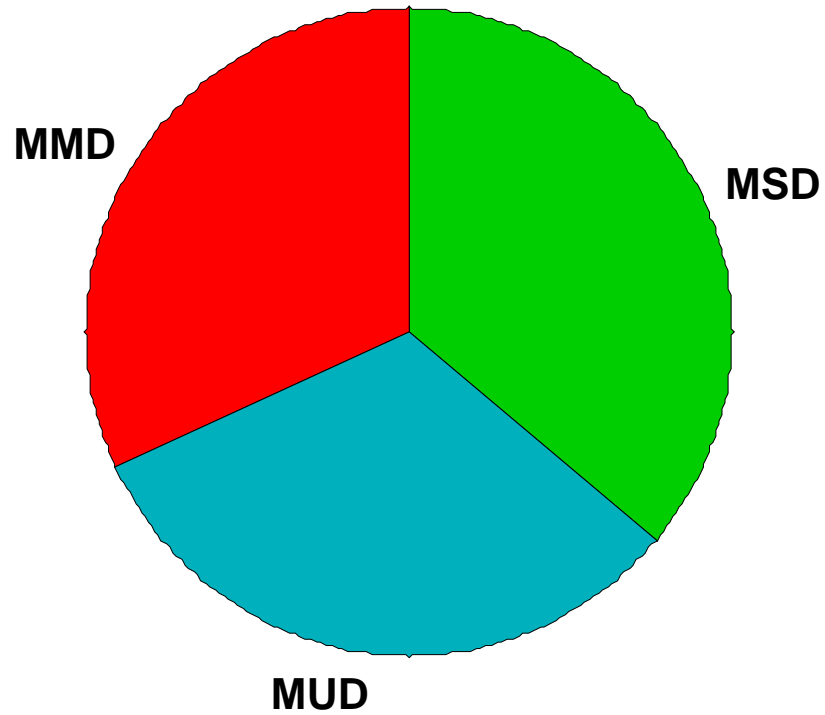
# Anzahl allogene Transplantationen



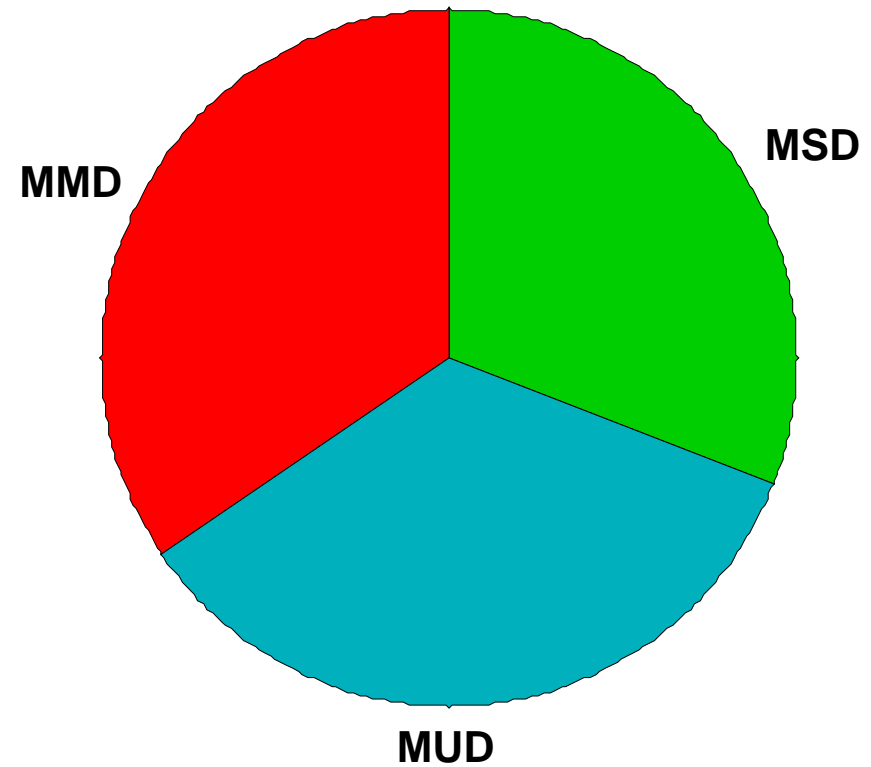


# Spender

2006



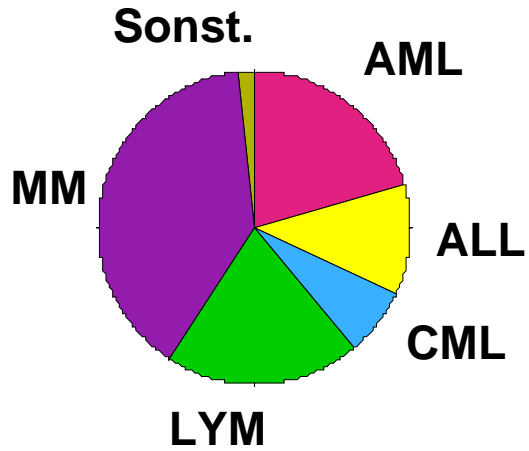
2008



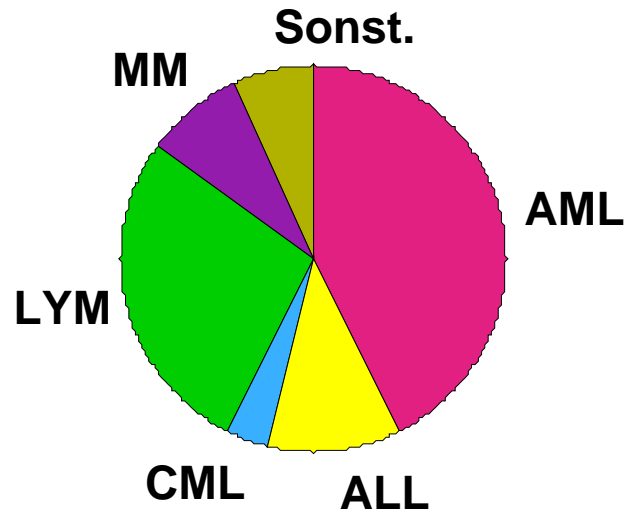


# Diagnosen

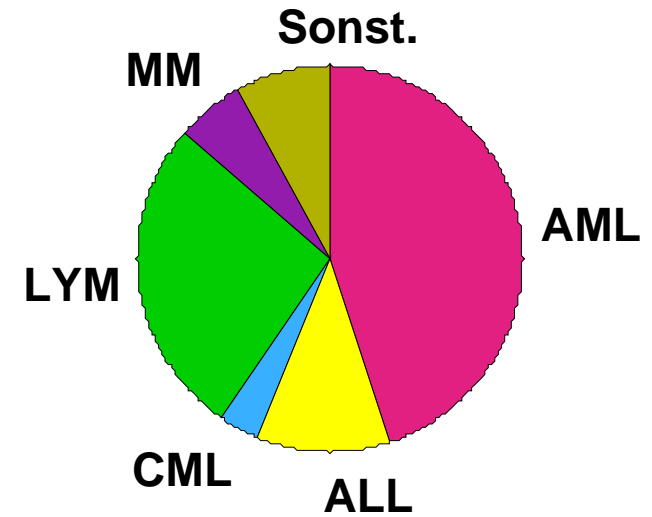
2004



2007



2008





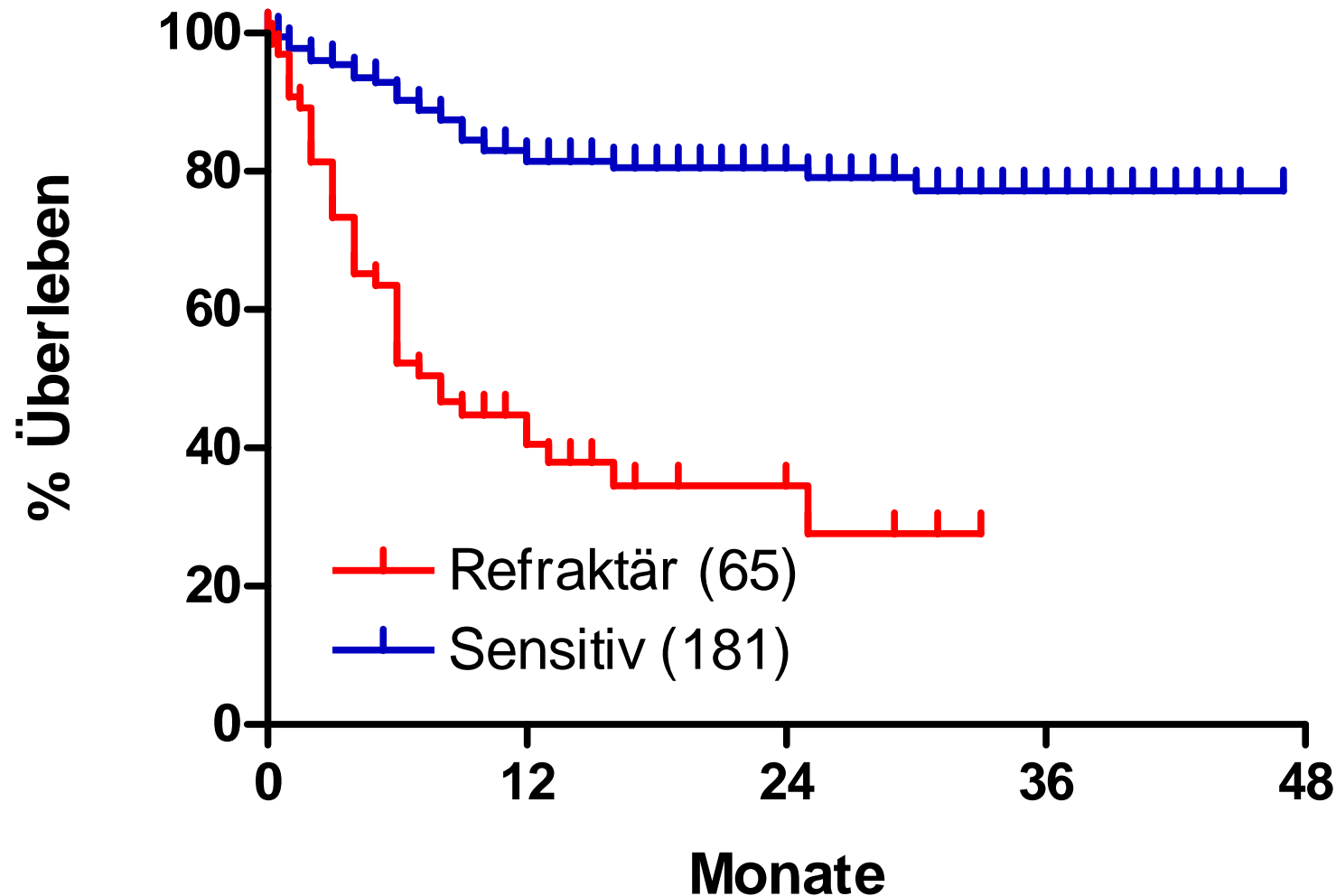
## Diagnosen im Einzelnen

AML CR1	15	Aggressive B	10
AML >CR1	14	CLL	6
MDS/sAML	9	T-PLL/T-NHL	4
		MCL	2
		Hodgkin	1
ALL CR1	6		
ALL >CR1	1	Myelom/Amyl	6
OMF	4	Päd	7
CML (BC)	3 (2)		
		<b>Gesamt</b>	<b>88</b>



# Gesamtüberleben nach Remissionsstatus

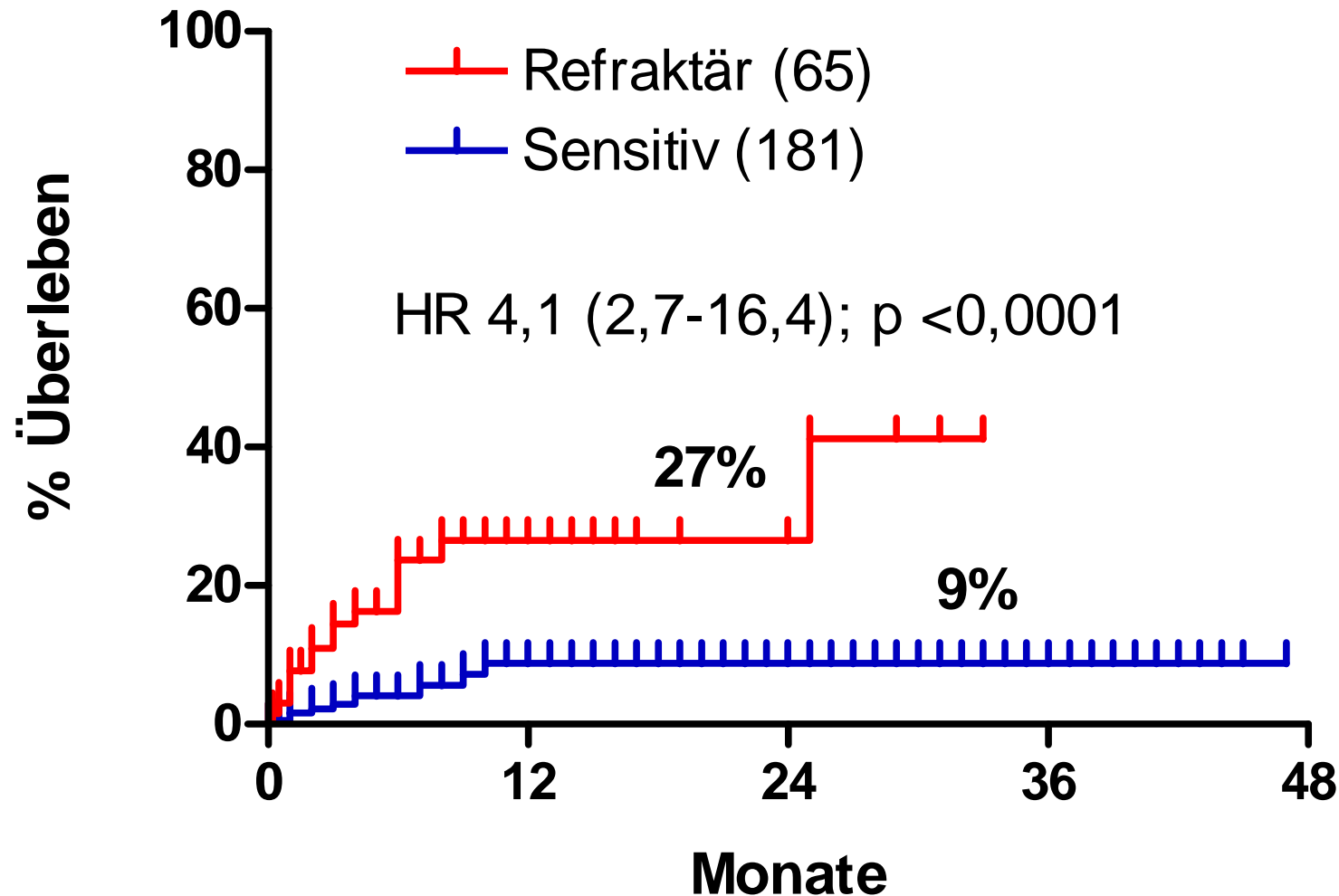
(Heidelberg 2005-2008,  
ohne Myelome, nicht-maligne und Pädiatrie)





# TRM nach Remissionsstatus

(Heidelberg 2005-2008,  
ohne Myelome, nicht-maligne und Pädiatrie)





# Hochauflösende HLA-Typsierung

(jeweils 4-stellig HLA-A, B, C, DR;

**Standard** in Heidelberg seit August 2005; n=272)

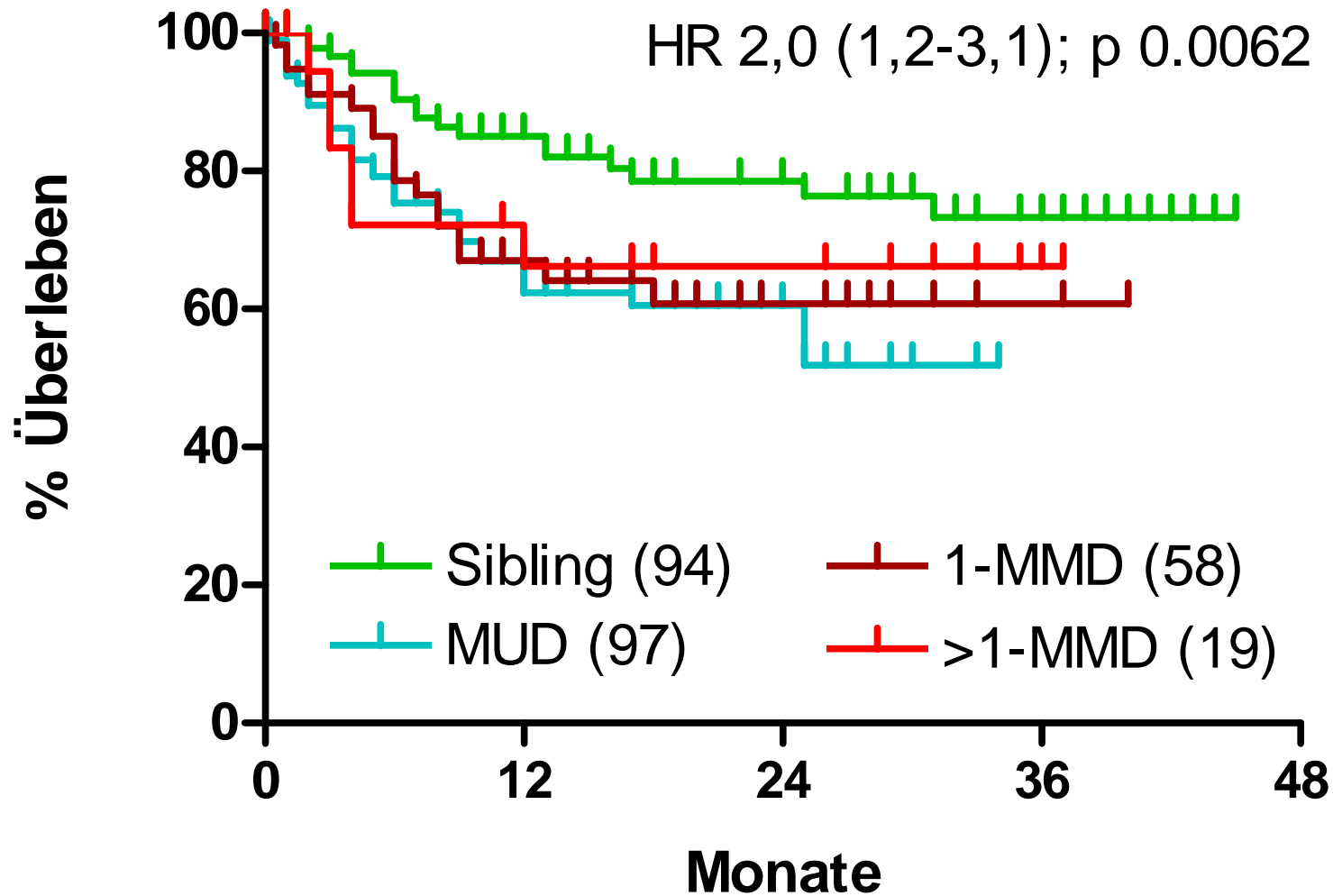
- HLA-identische Geschwister: 95  
davon syngene: 3
- HLA-identische Fremdspender: 99
- 1-Locus Mismatch: 58  
davon Allel-Mismatch: 12
- >1-Locus Mismatch: 20  
davon >2-Locus Mismatch: 4





# Gesamtüberleben nach HLA-Match

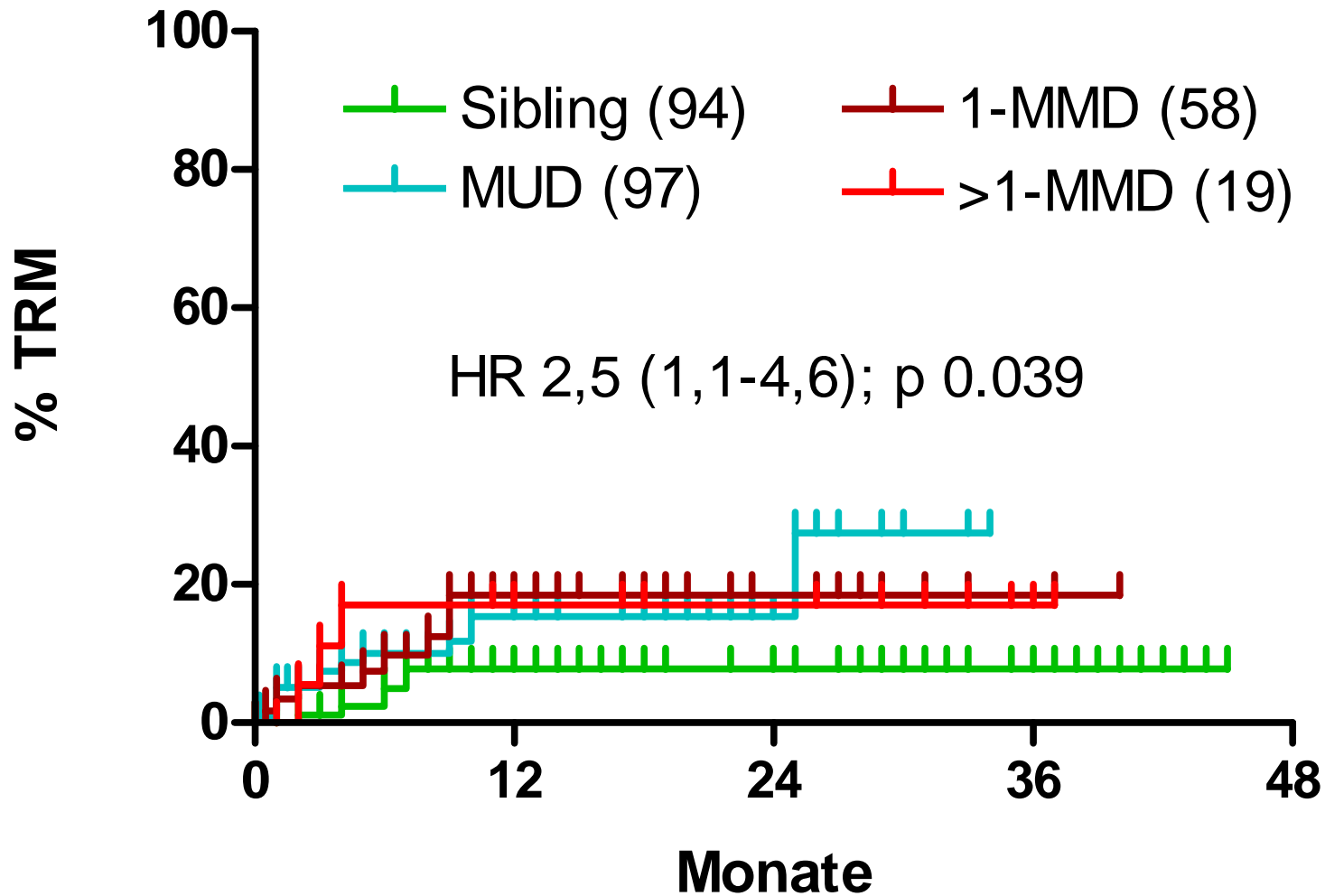
(Heidelberg seit August 2005; n=272)





# TRM nach HLA-Match

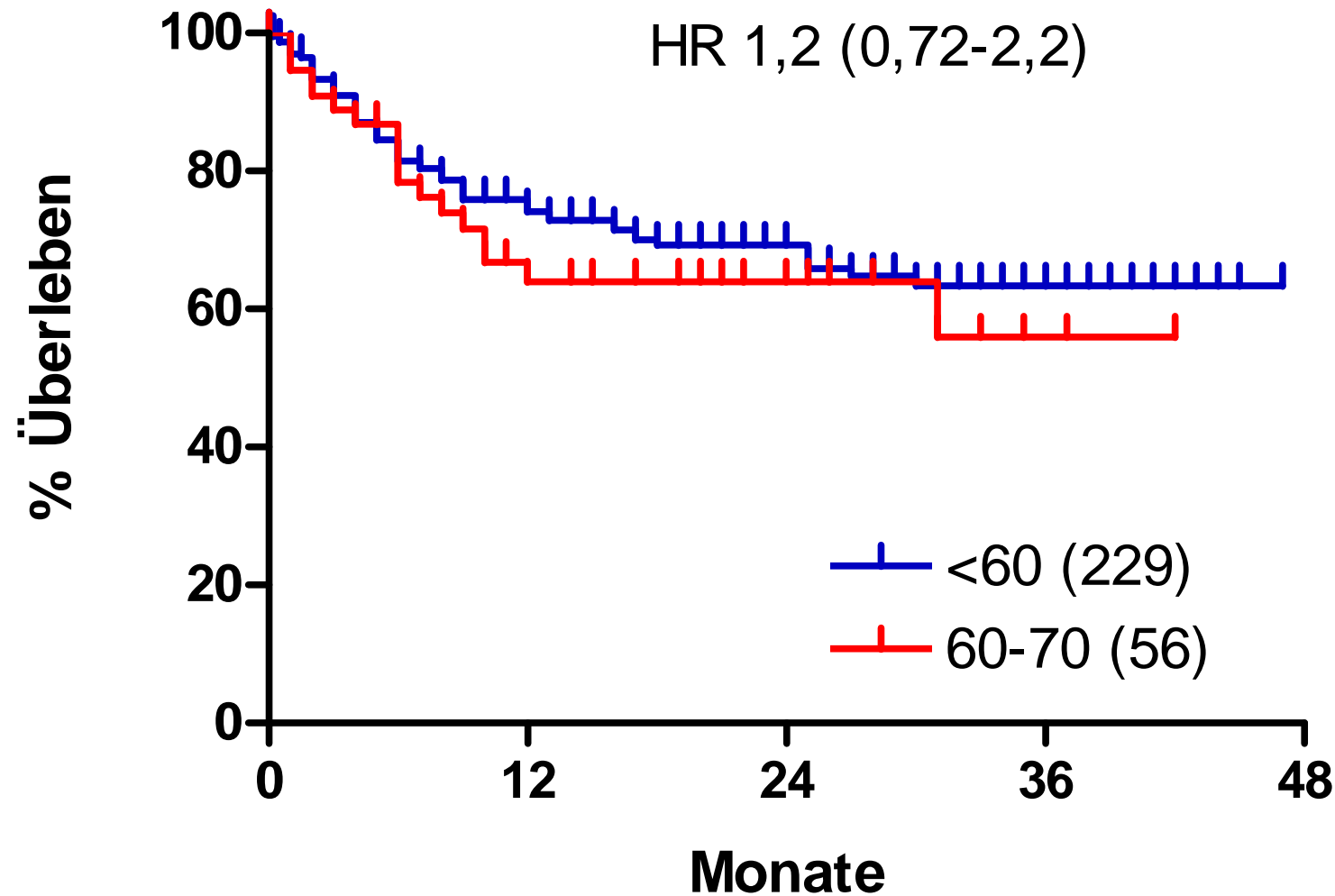
(Heidelberg seit August 2005; n=272)





# Gesamtüberleben und Alter

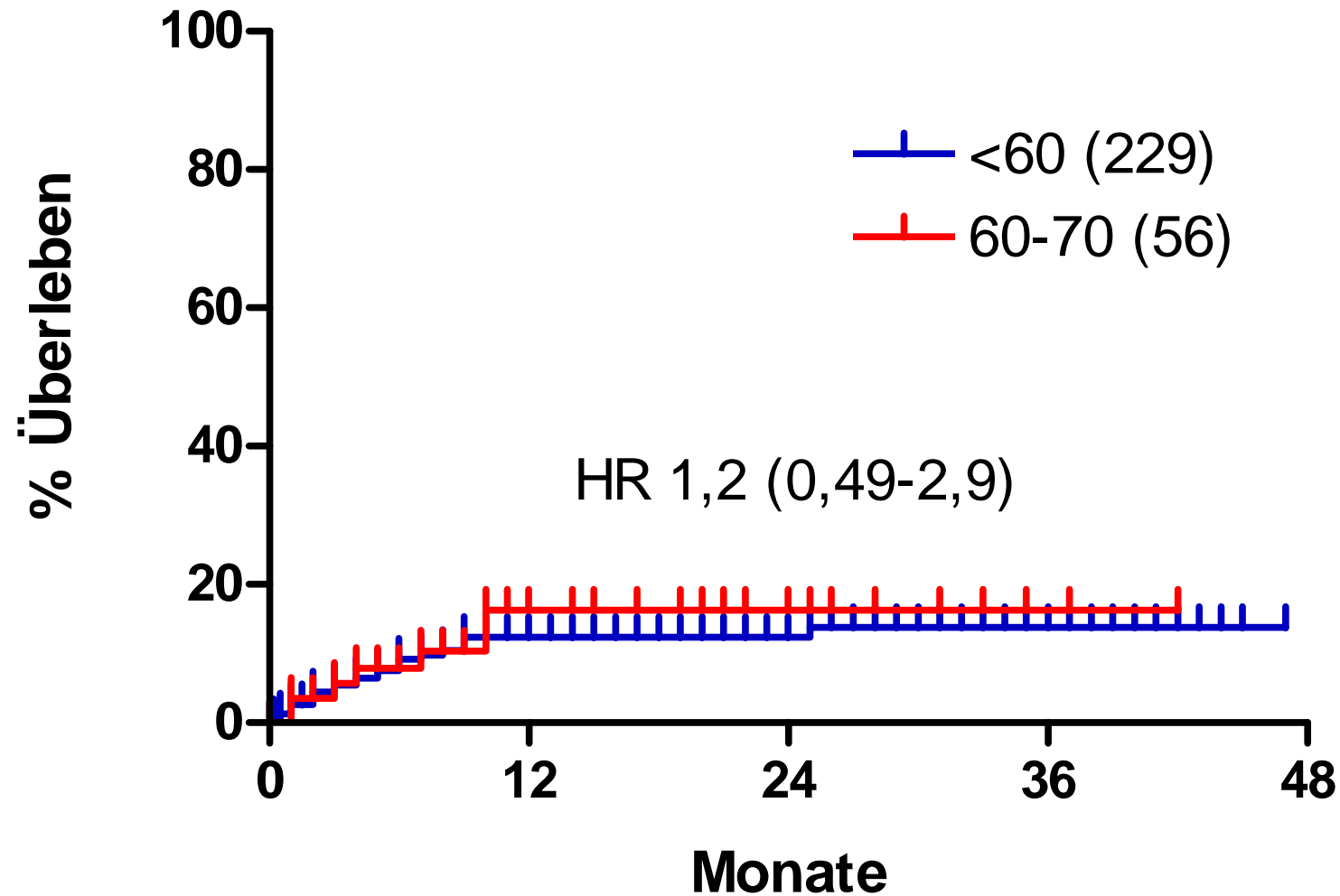
(Heidelberg 2005-2008; ohne Pädiatrie: 50 (18-70) Jahre)





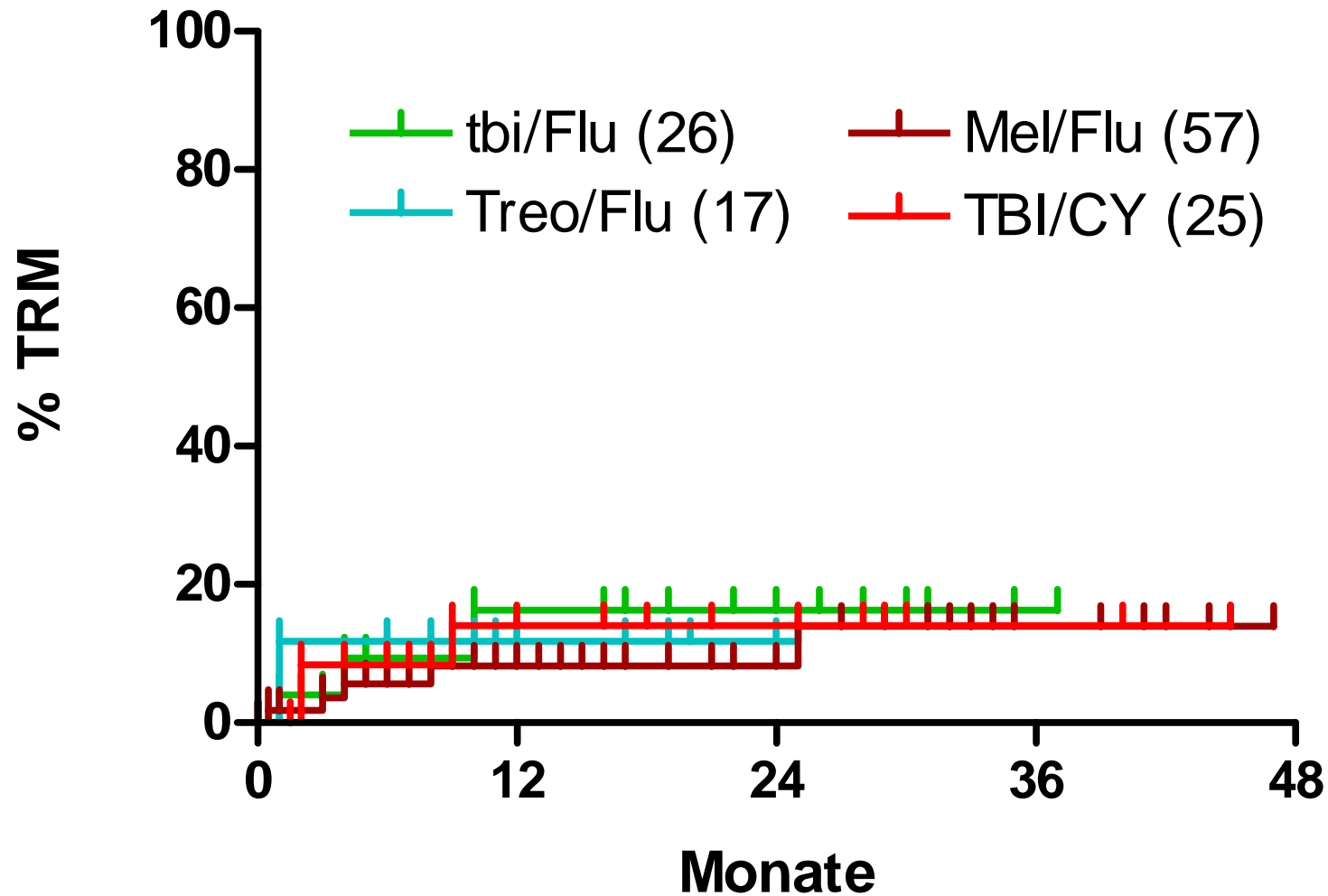
# TRM und Alter

(Heidelberg 2005-2008; ohne Pädiatrie: 50 (18-70) Jahre)



# TRM und Konditionierung

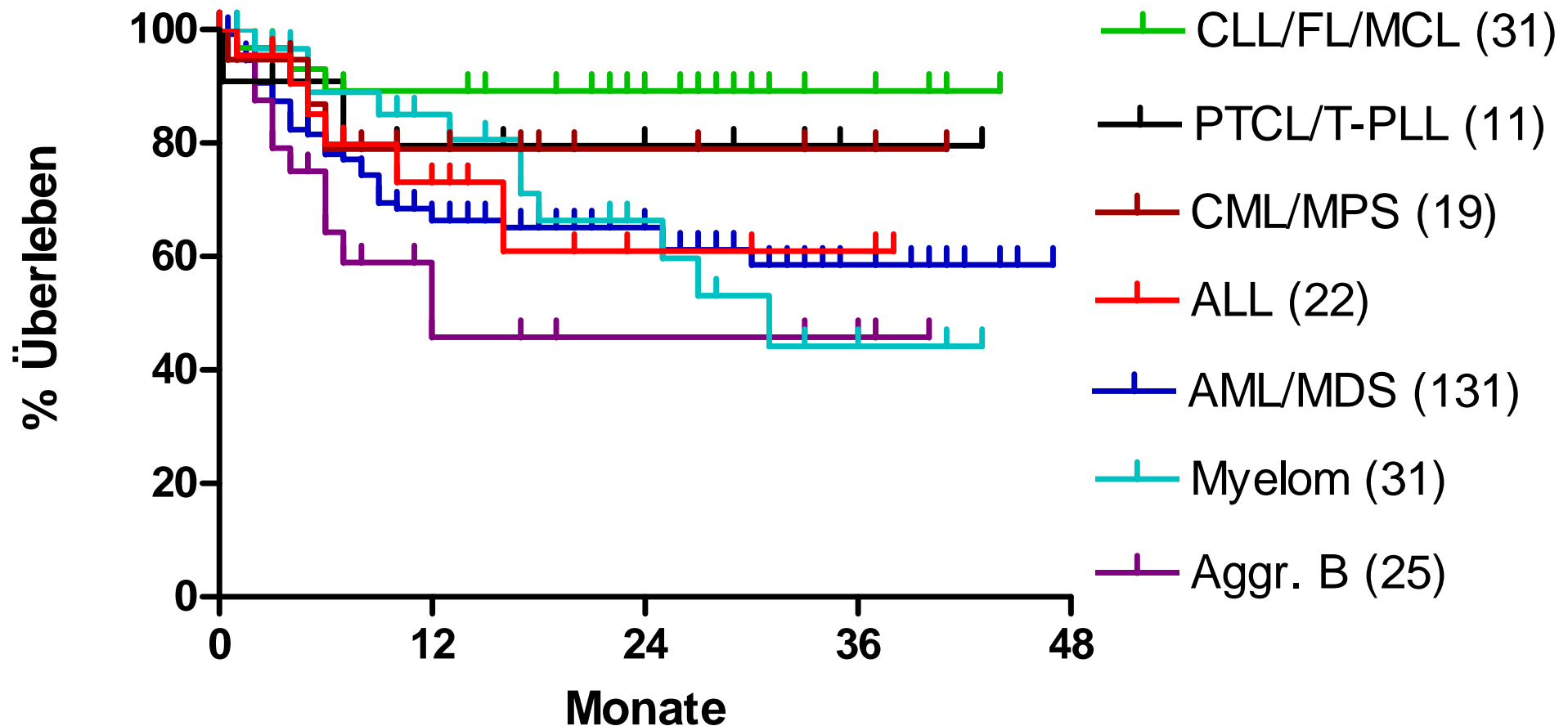
(Heidelberg 2005-2008, nur AML/MDS; n=125)





# Gesamtüberleben und Diagnose

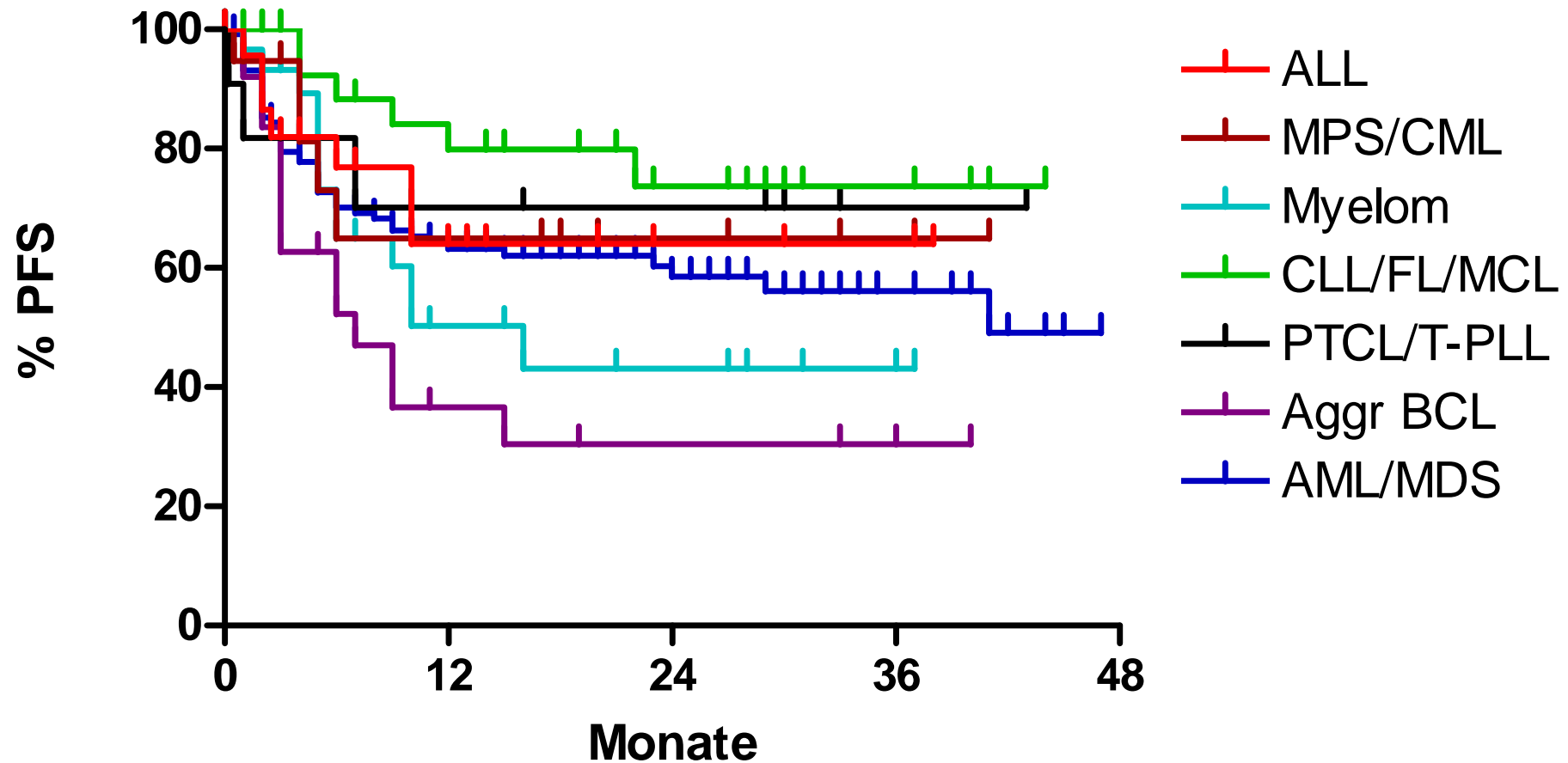
(Heidelberg 2005-2008, ohne kleine Entitäten)



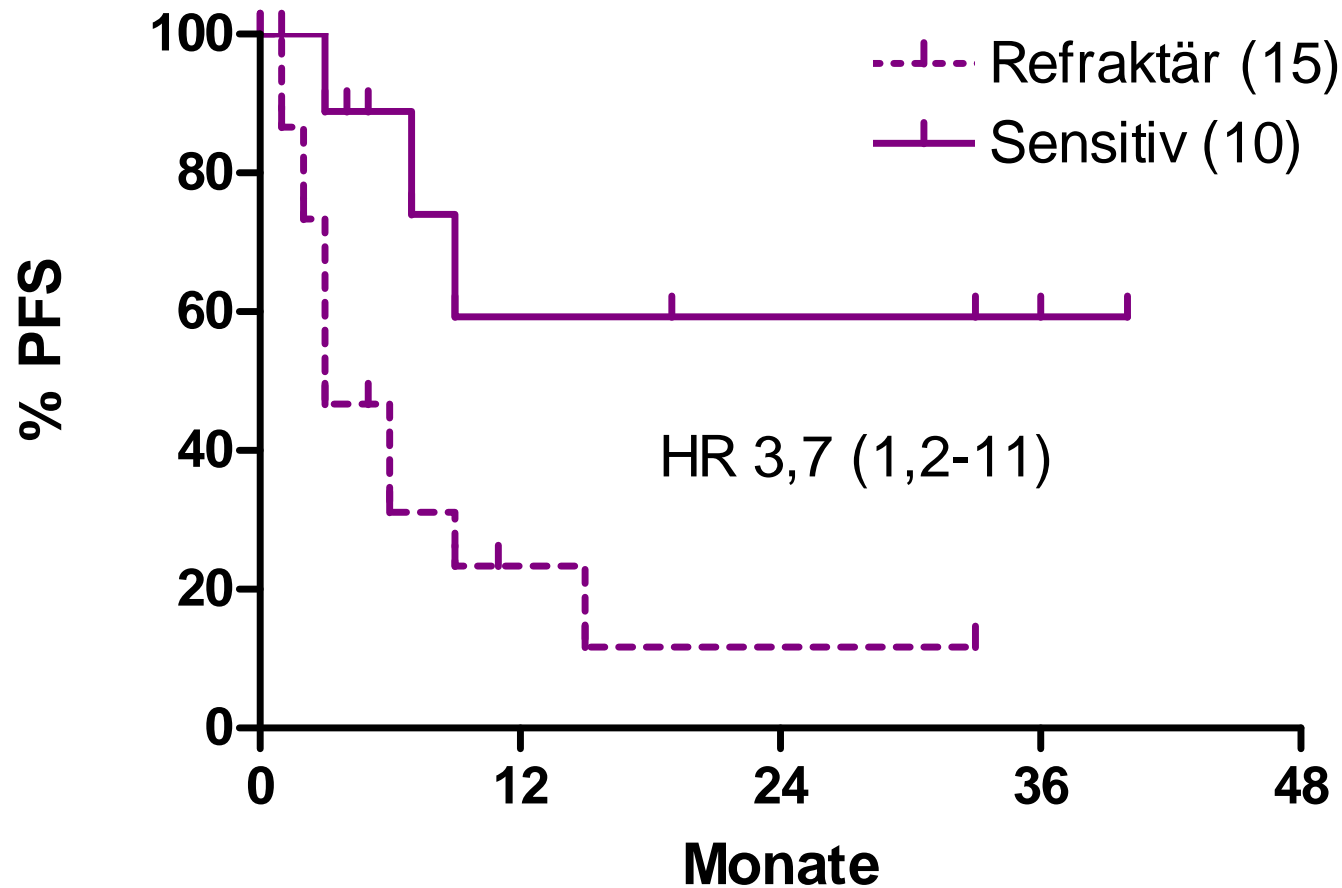


# PFS und Diagnose

(Heidelberg 2005-2008, ohne kleine Entitäten)



# Agressive B-Zell-Lymphome: PFS und Ansprechen (Heidelberg 2005-2008, n=25)



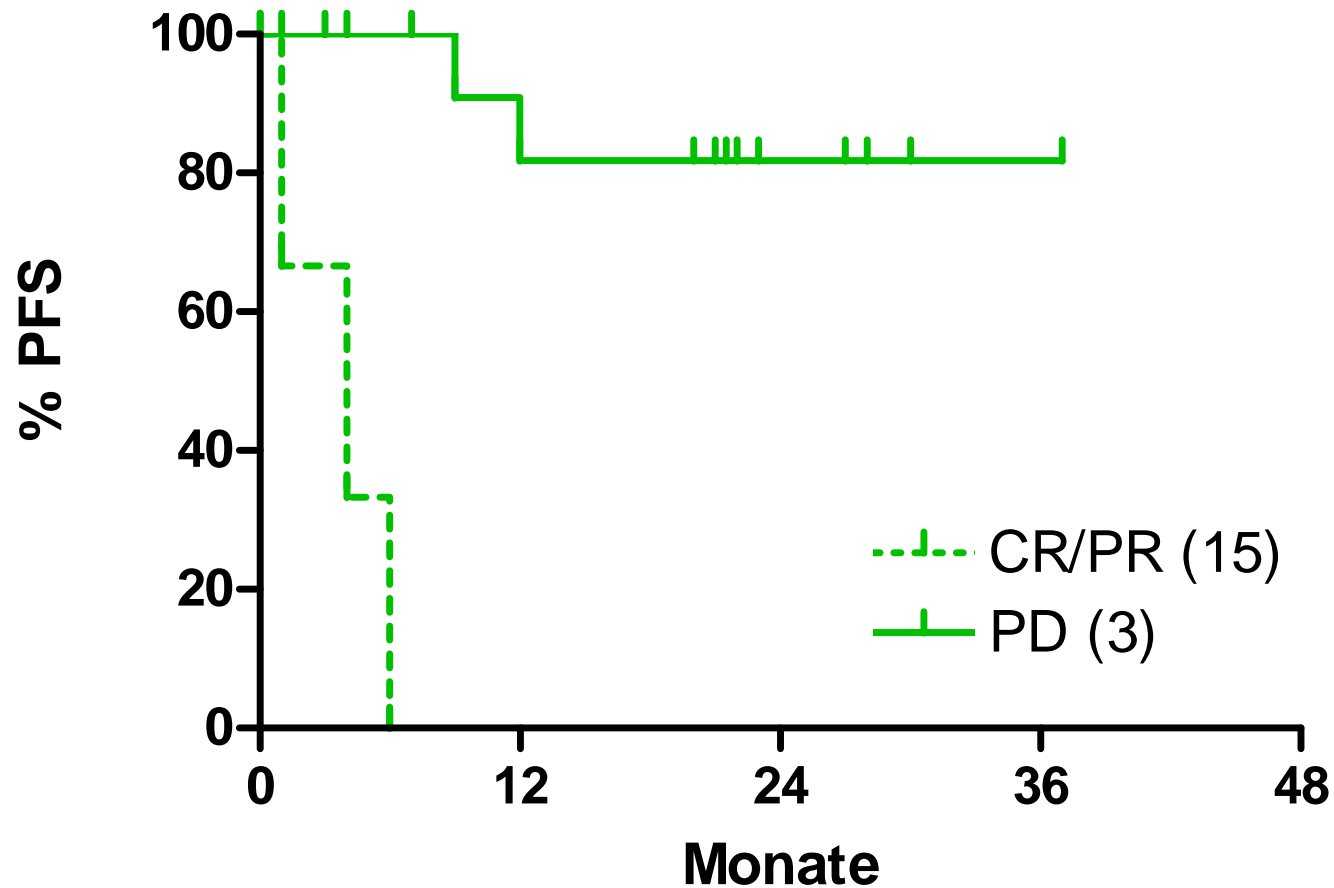




# CLL:

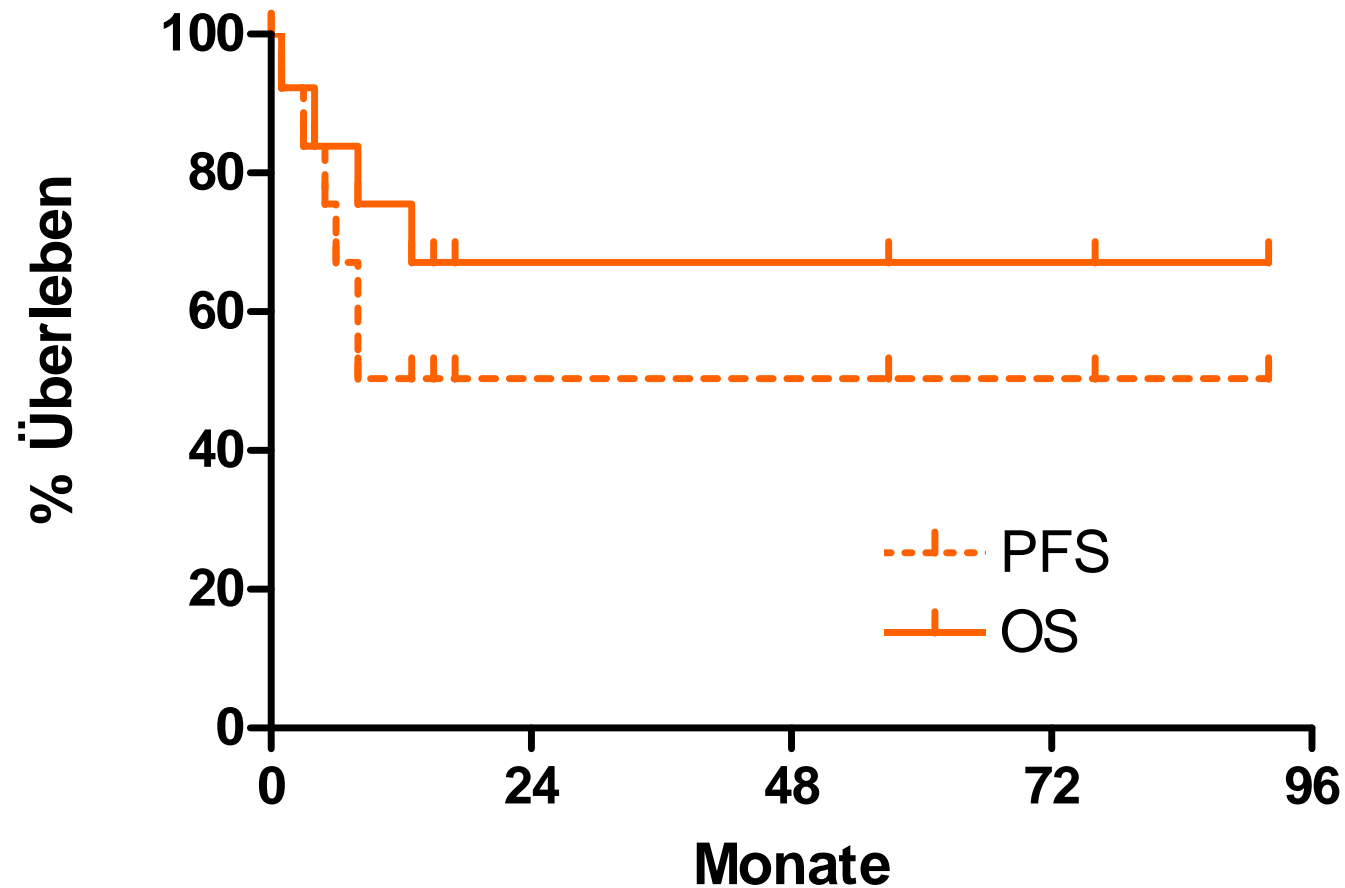
## Ansprechen und PFS

(Heidelberg 2005-2008, n=18)





# Hodgkin-Lymphom: OS und PFS (Heidelberg 2001-2008, n=14)





...und sonst?



original article

Annals of Oncology  
doi:10.1093/annonc/mdn691

Biology of Blood and Marrow Transplantation 14:100-107 (2008)  
© 2008 American Society for Blood and Marrow Transplantation  
1083-8791/08/1401-0001\$32.00/0  
doi:10.1016/j.bbmt.2007.10.019



## Controversies in Lymphoma: The Role of Hematopoietic Cell Transplantation for Mantle Cell Lymphoma and Peripheral T Cell Lymphoma

Peter Dreger,<sup>1</sup> Ginna G. Laport<sup>2</sup>

## Characteristics of relapse after autologous stem-cell transplantation for follicular lymphoma: a long-term follow-up

<sup>5</sup> M. Kornacker, J. Stumm, C. Pott, S. Dietrich, S. Süssmilch, M. Hensel, M. Nickelsen, M. Witzens-Harig, M. Kneba, N. Schmitz, A. D. Ho & P. Dreger\*

Leukemia (2008) 22, 1377-1386  
© 2008 Macmillan Publishers Limited All rights reserved 0887-6924/08 \$30.00  
www.nature.com/leu

VOLUME 26 · NUMBER 21 · NOVEMBER 1 2008

JOURNAL OF CLINICAL ONCOLOGY

ORIGINAL REPORT

### ORIGINAL ARTICLE

## Quantitative MRD monitoring identifies distinct GVL response patterns after allogeneic stem cell transplantation for chronic lymphocytic leukemia: results from the GCLLSG CLL3X trial

M Ritgen<sup>1</sup>, S Böttcher<sup>1</sup>, S Stilgenbauer<sup>2</sup>, D Bunjes<sup>2</sup>, J Schubert<sup>3</sup>, S Cohen<sup>4</sup>, A Humpe<sup>1</sup>, M Hallek<sup>5</sup>, M Kneba<sup>1</sup>, N Schmitz<sup>6</sup>, H Döhner<sup>2</sup> and P Dreger<sup>7</sup>, for the German CLL Study Group

From the University Hospital Carl Gustav Carus, Medizinische Klinik und Poliklinik I (Oncology), Department of Hematology and Stem Cell Transplantation, Asklepios Klinik St Georg, Hamburg; Deutsche Klinik für Diagnostik, Knochenmarkstransplantation, Wiesbaden; Hannover Medical University, Department of Hematology/Oncology

## Allogeneic Hematopoietic Stem-Cell Transplantation for Chronic Lymphocytic Leukemia With 17p Deletion: A Retrospective European Group for Blood and Marrow Transplantation Analysis

Johannes Schewlitz, Anja von Briesen, Ronald Brand, Dolores Caballero, Rodrigo Martino, Marija Isala, José A. García-Morales, Lilita Volin, Norbert Schmitz, Ralfner Schwendeläger, Arnold Ganser, Francesco Cuttoli, Brigitte Möhr, Stephan Seligerbauer, Marlene Bornhäuser, Thilo de Witte, and Peter Dreger

Bone Marrow Transplantation (2008), 1-2  
© 2008 Macmillan Publishers Limited All rights reserved 0268-3369/08 \$30.00  
www.nature.com/bmt

### LETTER TO THE EDITOR

## Occurrence of donor-derived CLL 8 years after sibling donor SCT for CML

JB Perz<sup>1</sup>, M Ritgen<sup>2</sup>, M Moos<sup>1</sup>, AD Ho<sup>1</sup>, M Kneba<sup>2</sup> and P Dreger<sup>1</sup>



# Allo-SCT sind

## „von Dusch“

ML Knee

R Gruß

R Adam

...und das Team!

## Station

T Bochtler

J Galler-Weber

S Gaul

C Harter

A Radujkovic

S Schmitt

M Villalobos

C Wiedemann

M Zoz

A Martin

T Luft

## Koordination

P Stadtherr

I Opitz

## Psychologie

D Tönnessen

## Ambulanz

J Dengler

F Bellos

T Luft

S Schönland

K Maciol

A Pirch

D Prochaska

## Case Manager

A Bondong

K Zerfaß

## Labor

T Luft

M Conzelmann

M Moos

S Dietrich

## HLA

H Tran

S Scherer

G Opelz

& Team

## Sozialdienst

A Bergner

G Daiß

## Finanzen & MDK

A Bondong

M Thalheimer

## Anleitung

U Hegenbart

P Dreger

## Weckdienst

G Egerer

AD Ho

...alle Mitarbeiter der MedV